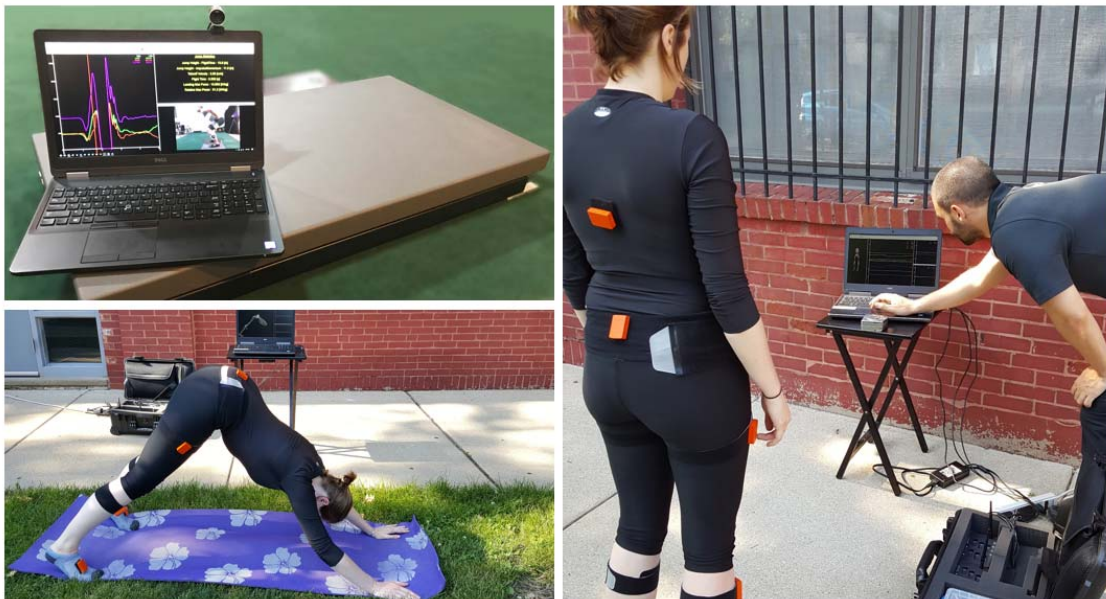




...The Total Solution in Motion Capture

### Motion Capture Anywhere!

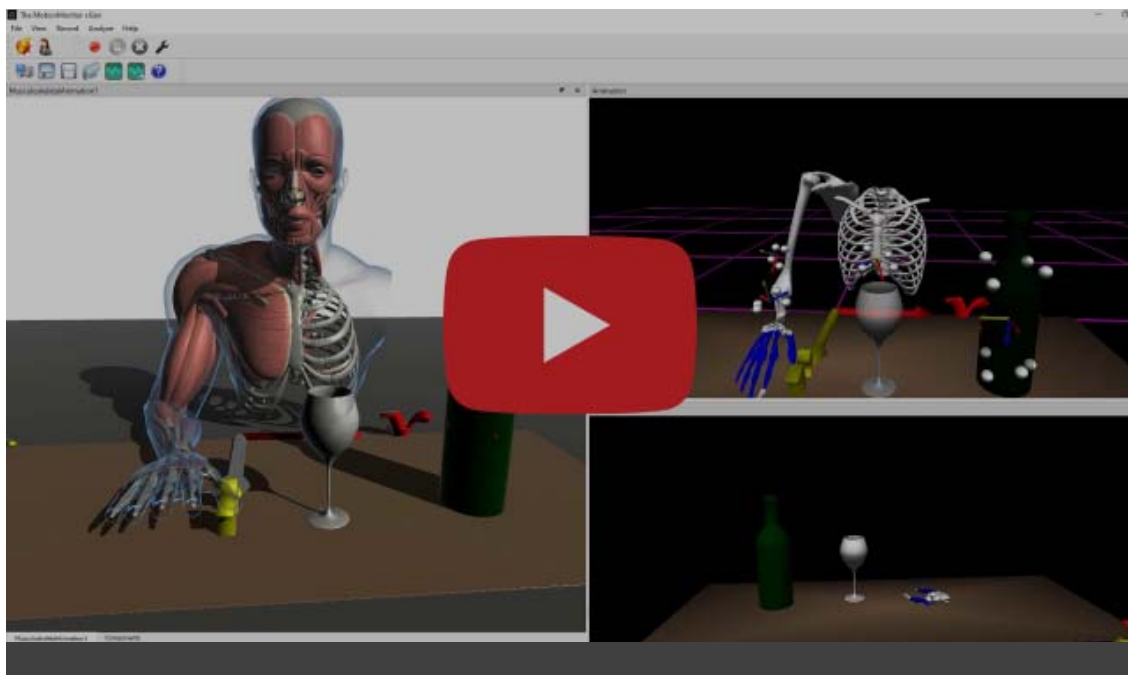


You don't have to be limited to collecting data in the lab! The MotionMonitor provides portable motion capture solutions, with the option of enclosing all hardware components in

a luggable case (or cases). Portable technologies such as force plates, EMG and motion capture can be used to capture data in clinical and research settings and out in the field. See an example of an outdoor data collection [here](#).

Reach out today and let us help you configure a portable system that best meets your needs! You can reach us at [sales@TheMotionMonitor.com](mailto:sales@TheMotionMonitor.com) or give us a call, (773) 244-6470.

## Hybrid MoCap: Combining Technologies to Take Advantage of Their Strengths



**The MotionMonitor xGen** allows users to exploit the strengths of different mocap technologies through hybrid motion tracking. We provide real-time systems which integrate & co-locate different motion capture technologies for biomechanical modeling. For example, track full body and fine motor finger movements with a combination of optical cameras and electromagnetic mini-sensors. You can see an example of this setup in the video above, as well as [here](#).

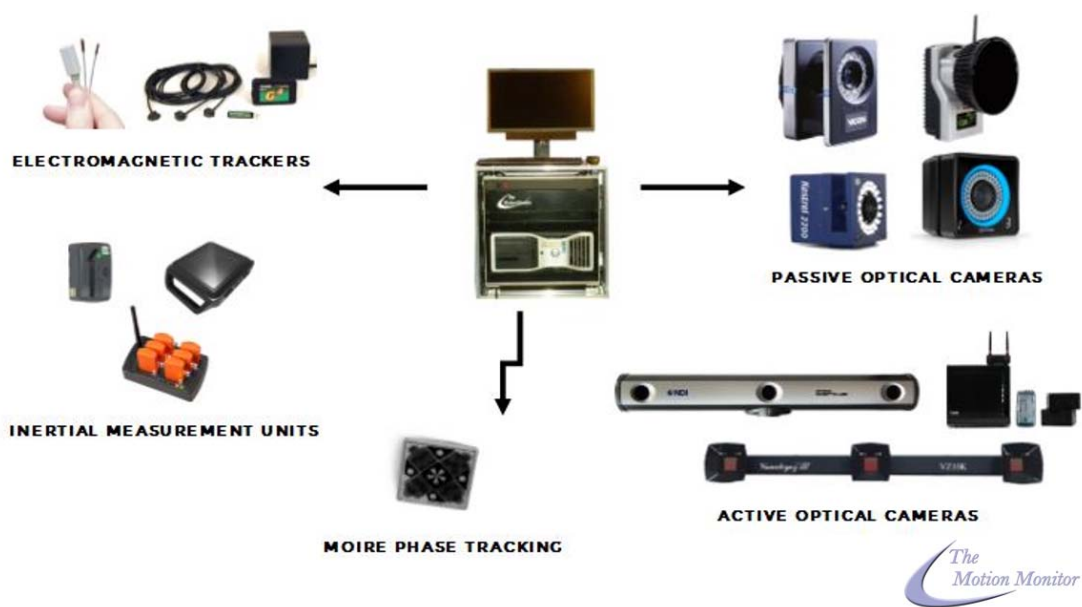
Another example of a hybrid motion capture system is optical tracking & IMUs. This hybrid configuration allows users to track occluded segments with inertial sensors while the rest

of the subject is tracked by the cameras. See an example of this setup below and [here](#).

How can hybrid motion capture benefit your current data collections? Send us an email and we'd be happy to help you find a solution that works best for you. You can reach us at [sales@TheMotionMonitor.com](mailto:sales@TheMotionMonitor.com) or give us a call, (773) 244-6470.



### What We Do:



Innovative Sports Training, Inc. is the developer of **The MotionMonitor** real-time biomechanics software package. We provide custom configured systems including hardware, software and application support in a turn-key package. Or, we also offer **The MotionMonitor** software to integrate with existing supported hardware.

Visit our [What We Do web page](#) to learn more.

---

### Contact Us:

We want to hear from you! Please feel free to share with us your experiences, ideas for new projects, or suggestions for further improvements to *The MotionMonitor*! Give us a call or send us an email today.

*The MotionMonitor* Support Team

(773) 244-6470, [support@TheMotionMonitor.com](mailto:support@TheMotionMonitor.com)

Follow us on social media and share your research @motionmonitor!



---

*Copyright © 2021 Innovative Sports Training, Inc, All rights reserved.*

You are included in this mailing because of information provided to us through our website, directly by email or at one of the following conferences ISB, ASB, ACSM, CSM, NATA, SfN, Human Factors

**Our mailing address is:**

Innovative Sports Training, Inc  
3711 North Ravenswood Ave  
STE 150  
Chicago, Illinois 60613

[Add us to your address book](#)